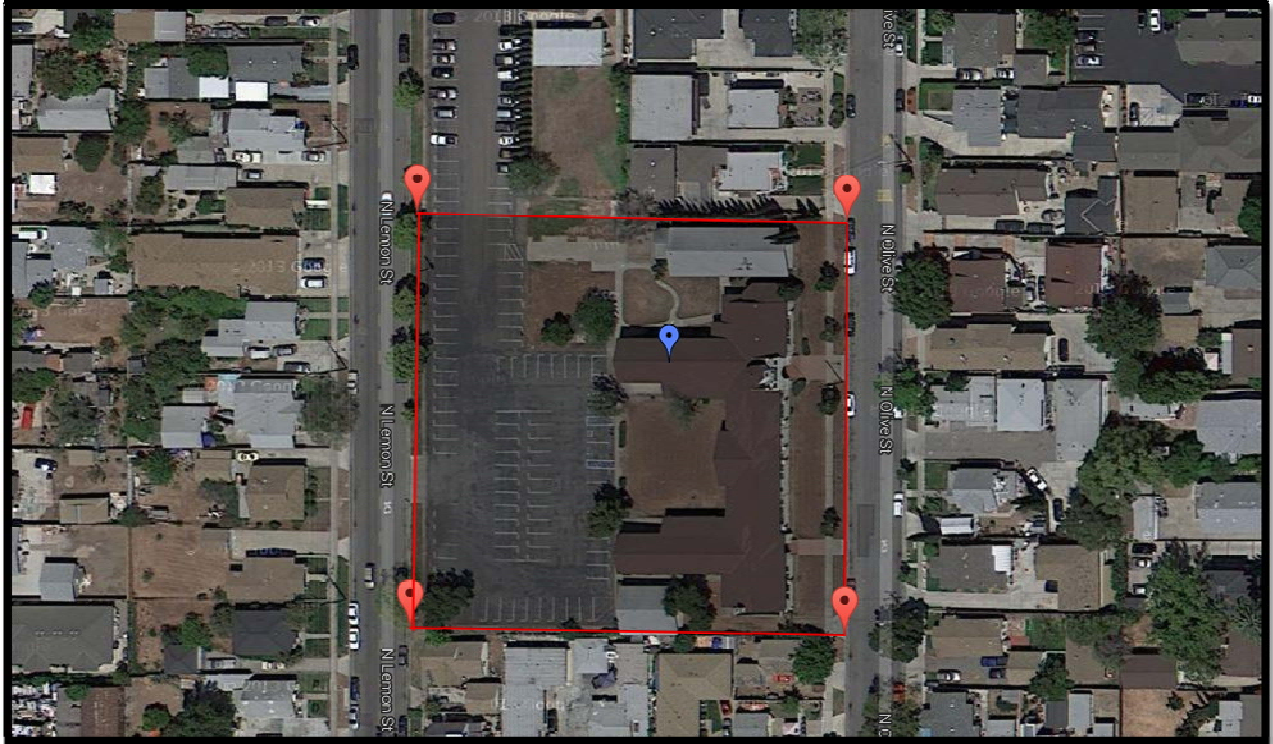


# Aerial



## RECORD OF SURVEY NO. 2011-1151 IN THE CITY OF ORANGE, COUNTY OF ORANGE, STATE OF CALIFORNIA

BEING A SURVEY OF LOT 1 AND 2 OF TRACT 566, AS SHOWN ON A MAP FILED IN BOOK 18, PAGE 20 OF MISCELLANEOUS MAPS, IN THE OFFICE OF THE COUNTY RECORDER OF ORANGE COUNTY, CALIFORNIA, ALSO BEING A SURVEY OF LOTS 4 THROUGH 7, INCLUSIVE AND PORTION OF LOT 3 OF THE JOHN R. SCHOOLEY'S FIRST ADDITION TO THE CITY OF ORANGE, AS SHOWN ON A MAP FILED IN BOOK 8, PAGE 17 OF MISCELLANEOUS MAPS, IN THE OFFICE OF THE COUNTY RECORDER OF ORANGE COUNTY, CALIFORNIA, ALSO BEING A SURVEY OF PORTION OF LOT 4 IN BLOCK G OF THE A.B. CHAPMAN TRACT, AS SHOWN ON A MAP FILED IN BOOK 102, PAGE 13 OF MISCELLANEOUS MAPS, IN THE OFFICE OF THE COUNTY RECORDER OF ORANGE COUNTY, CALIFORNIA,

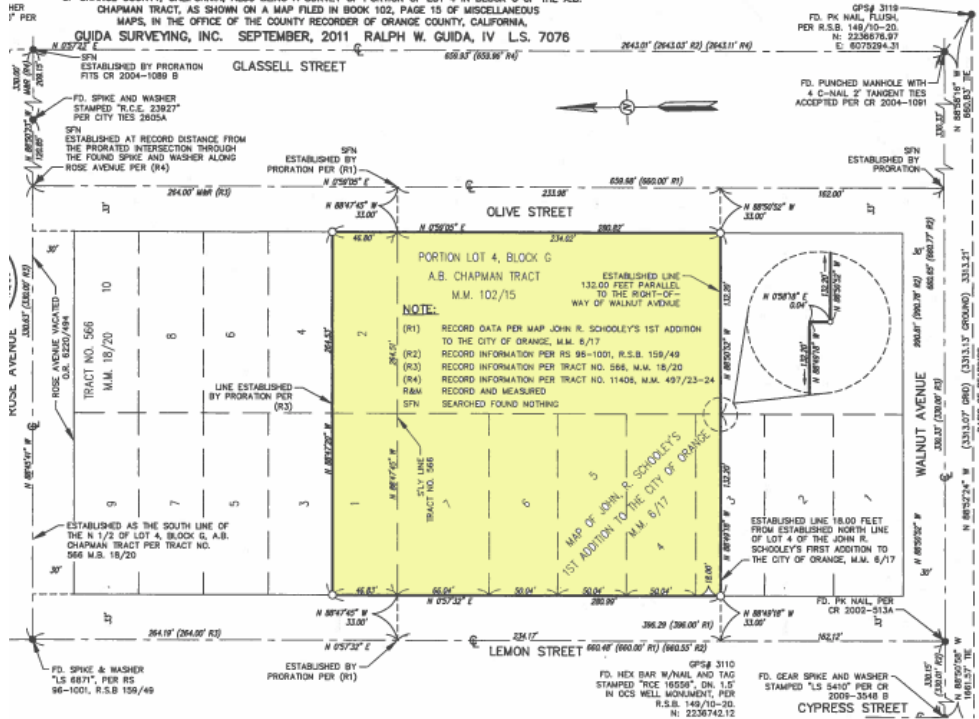
QUIDA SURVEYING, INC. SEPTEMBER, 2011 RALPH W. GUIDA, IV L.S. 7076

ACCEPTED AND FILED AT THE REQUEST OF  
THE ORANGE COUNTY SURVEYOR

DATE: APRIL 12, 2012  
TIME: 8:02 AM PER 8-3.00  
INSTRUMENT NO. 201200020333  
BOOK 253 PAGE 6 OF 6

TOM DALY  
COUNTY CLERK-RECORDER  
BY: *Tom Daly*

GPS# 3119  
FD. PK NAIL, FLUSH  
PER R.S.B. 149/10-20  
N: 2326876.97  
E: 9079294.21



541 N. Lemon Street, Orange, CA

