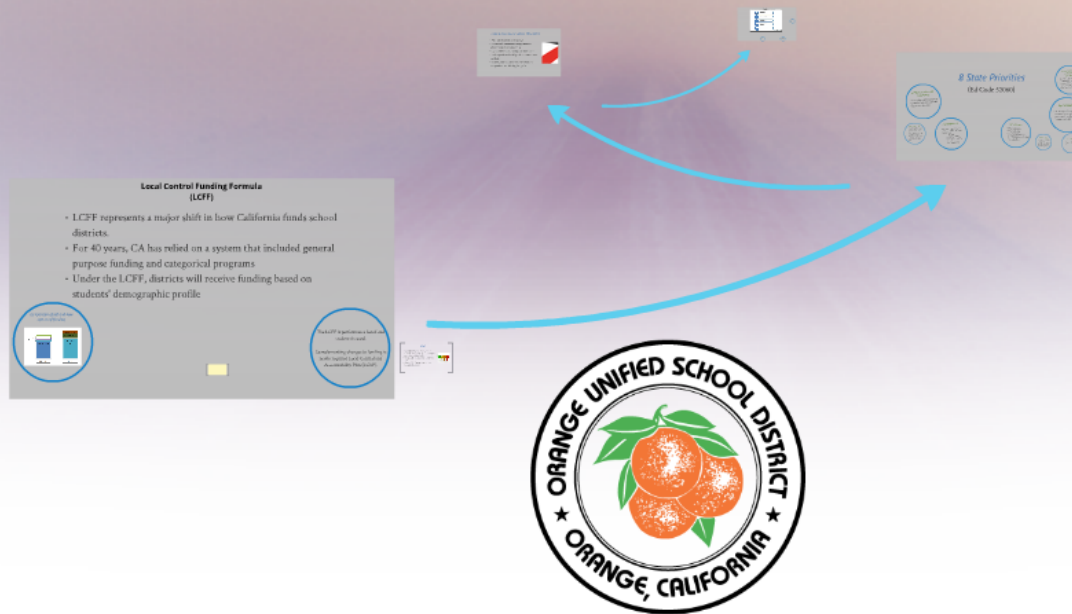
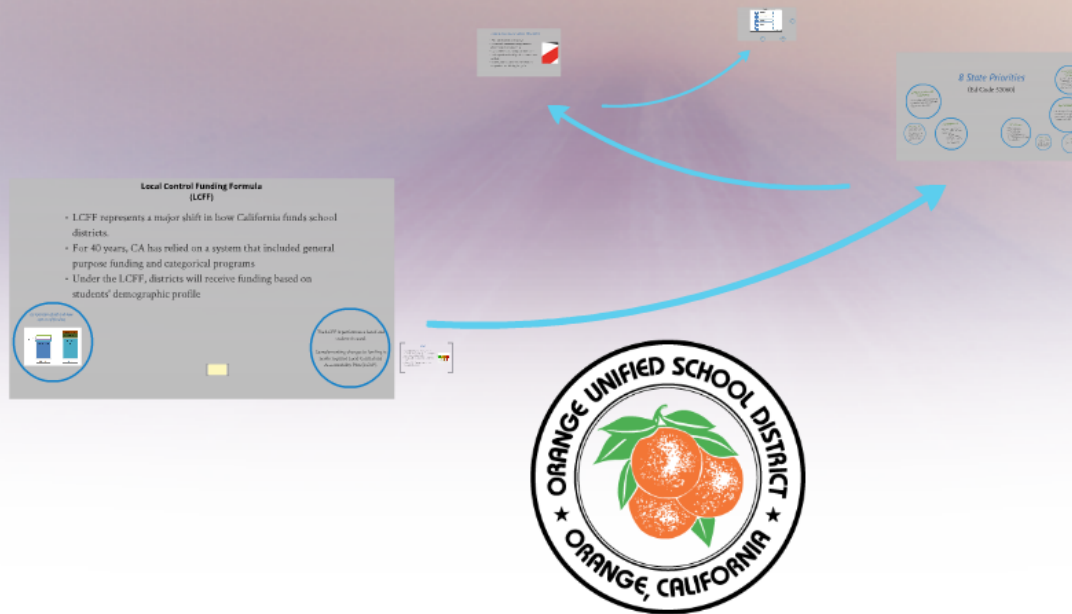


Board Presentation - Local Control Funding Formula and Accountability Plan Development November 14, 2013 Educational Services Division



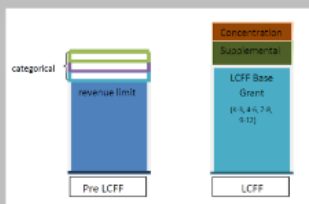
Board Presentation - Local Control Funding Formula and Accountability Plan Development November 14, 2013 Educational Services Division



Local Control Funding Formula (LCFF)

- LCFF represents a major shift in how California funds school districts.
- For 40 years, CA has relied on a system that included general purpose funding and categorical programs
- Under the LCFF, districts will receive funding based on students' demographic profile

Comparison of old and new system of funding



The LCFF is performance based and student focused.

Complementing changes to funding is newly required Local Control and Accountability Plan (LCAP).

Comparison of old and new system of funding

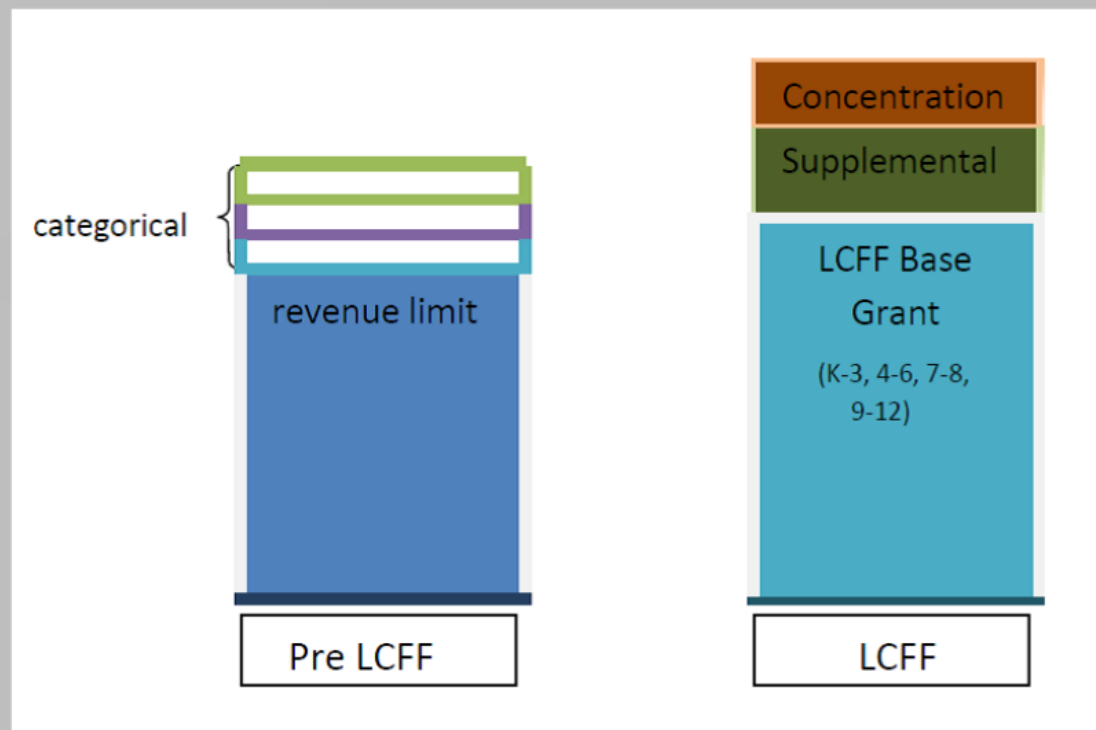
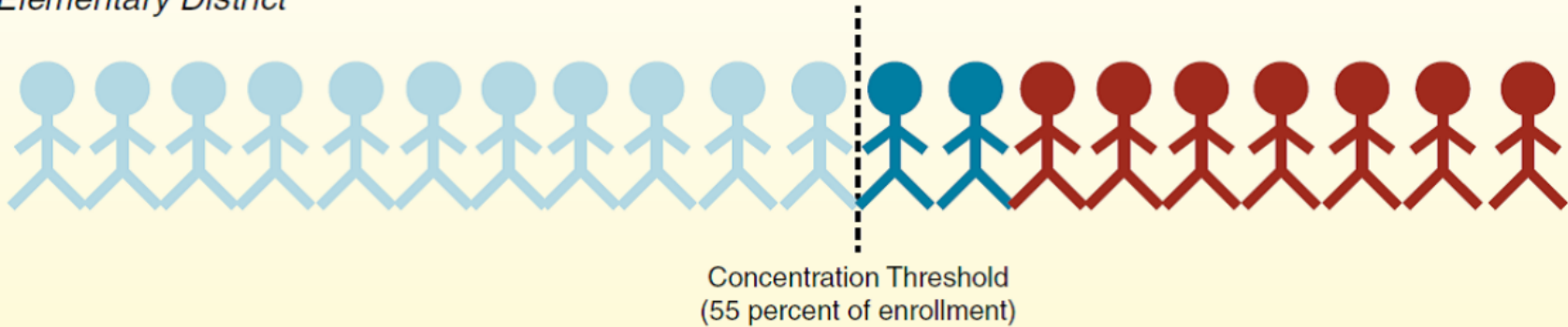






Illustration of How LCFF Works

Elementary District



Funding Each Student Generates						
Student	Base K-3 Rate	K-3 Adjustment	EL/LI Supplement	EL/LI Concentration	Total	
 EL/LI	\$6,845	\$712	\$1,511	—	\$9,068	
 EL/LI	\$6,845	\$712	\$1,511	\$3,779	\$12,847	
 Non-EL/LI	\$6,845	\$712	—	—	\$7,557	

EL/LI = English learner/low-income.



The LCFF is performance based and student focused.

Complementing changes to funding is newly required Local Control and Accountability Plan (LCAP).

- B
- d
- t
- S
- 2
- F
- d

LCAP

- Before the start of 2014-15 school year, all districts will need to have in place a LCAP prior to the adoption of their budget
- SBE approved templates will be available March 2014
- However, OUSD has begun the process of developing the contents



8 State Priorities

(Ed Code 52060)

Williams Requirements (compliance)

- Appropriate teacher assignment
- Sufficient instructional materials
- Facilities maintenance

Parent Involvement

- Districts make to seek parent input in making decisions for school district and each individual school site
- How districts will promote parental participation in programs for economically disadvantaged pupils, English Learners (EL), foster youth and individuals with exceptional needs

Pupil Engagement

Measured by multiple indicators including, but not limited to, rates associated with:

- Attendance
- Chronic absenteeism
- Dropout (middle and high school)
- High school graduation

School Climate

- Pupil suspension
- Expulsion rates
- Other local measures assessing safety and school connectedness

Academic Content and Performance Standards

- How the programs and services will enable English learners to access the Common Core academic content Standards and the English Language Development standards

Pupil Achievement

- Measured by multiple indicators including, but not limited to assessment data, college readiness and language proficiency

Access and Enrollment

- Broad course of study that includes core subject areas
- Programs and services developed and provided to low income pupils, EL, foster youth and individuals with exceptional needs

Pupil Outcomes

- Subject areas comprising a broad course of study

Pupil Achievement

- Measured by multiple indicators including, but not limited to assessment data, college readiness and language proficiency

Academic Content and Performance Standards

- How the programs and services will enable English learners to access the Common Core academic content Standards and the English Language Development standards

Pupil Engagement

Measured by multiple indicators including, but not limited to, rates associated with:

- Attendance
- Chronic absenteeism
- Dropout (middle and high school)
- High school graduation

Parent Involvement

- Efforts districts make to seek parent input in making decisions for school district and each individual school site
- How districts will promote parental participation in programs for economically disadvantaged pupils, English Learners (EL), foster youth and individuals with exceptional needs

School Climate

- Pupil suspension
 - Expulsion rates
 - Other local measures
- assessing safety and school
connectedness

Access and Enrollment

- Broad course of study that includes core subject areas
- Programs and services developed and provided to low income pupils, EL, foster youth and individuals with exceptional needs

Pupil Outcomes

- Subject areas comprising a broad course of study



*Williams Requirements
(compliance)*

- Appropriate teacher assignment
- Sufficient instructional materials
- Facilities maintenance

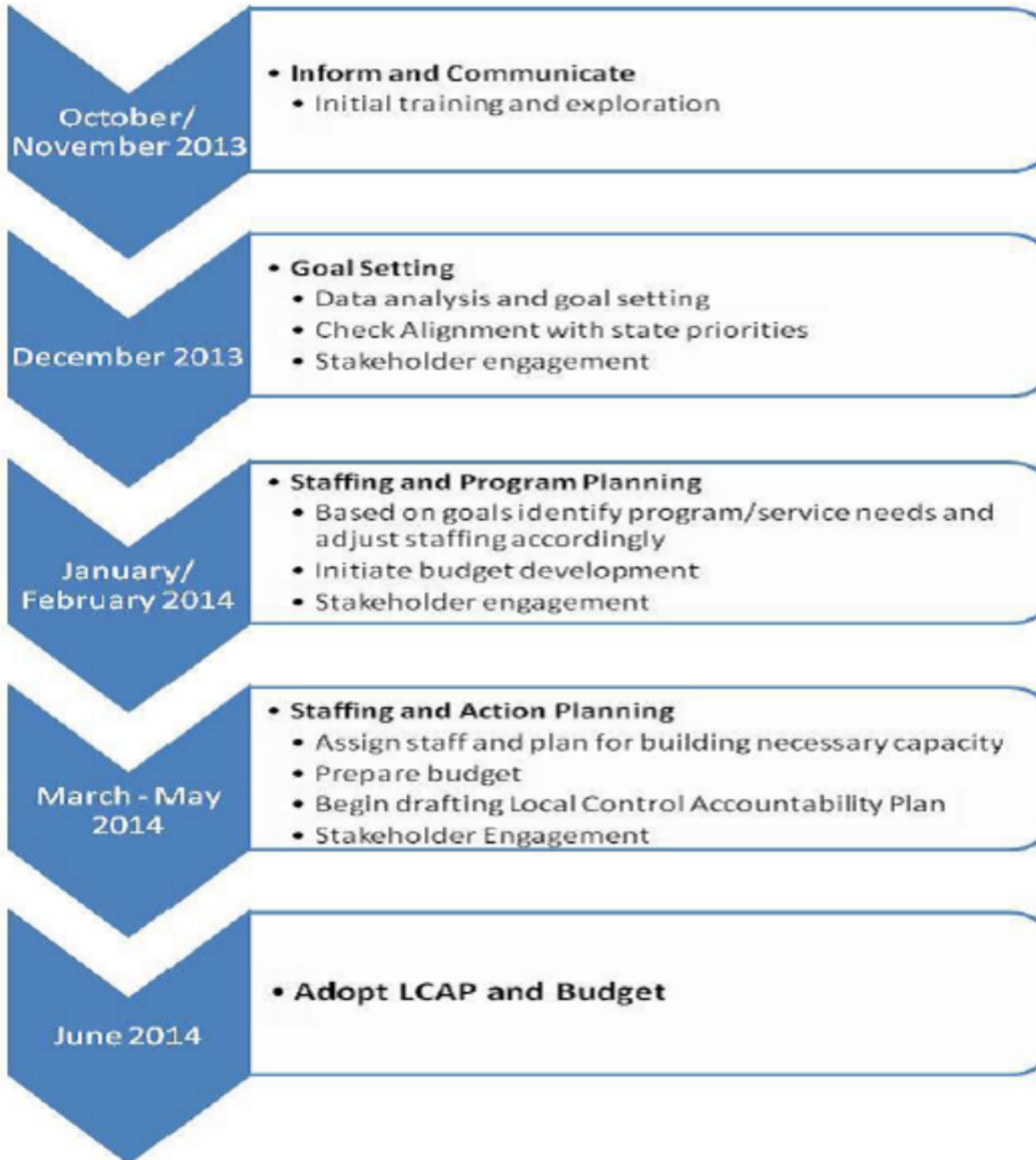
Actions LEAs should take in 2013-2014

- Maintain local advisory groups
- Parent and community engagement in planning and accountability
- Use regulations and templates for LCAP
- Define goals and anticipated outcomes based on data
- Identify and prioritize activities that are responsive to achieving the goals



Timeline

Local Control Accountability Plan Preparation Activities



Progress...

- General LCFF information shared
- Stakeholder input surveys developed
- Web page developed on our District's website

Stakeholder Engagement

District Council PTA

District English Learner Advisory Committee

District Advisory Council

Principal Leadership

Superintendent's Forum

Educational Technology Advisory Council

School Site Community Aides

Curriculum Council

School Site Councils

GATE Advisory Council

Special Ed Advisory Council

Student Board Members

Next steps...

- Compile all stakeholder input
- Present proposed plan to stakeholders
- Present plan at Board meeting for public hearing
- Board adoption of LCAP plan

Board Presentation - Local Control Funding Formula and Accountability Plan Development November 14, 2013 Educational Services Division

